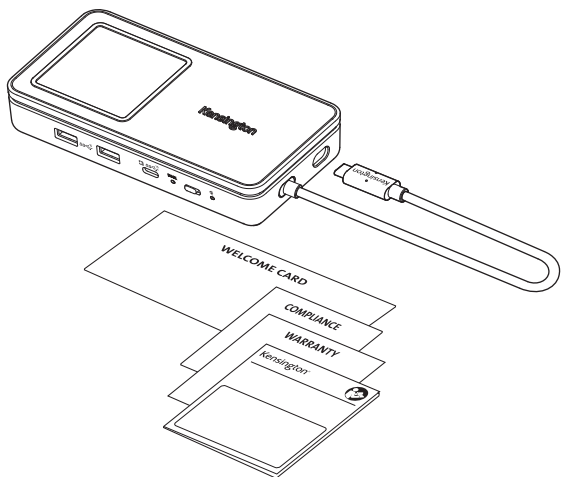


Kensington®

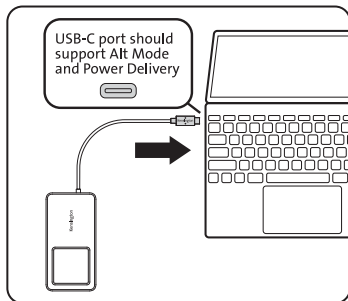


SD1700P USB-C Dual 4K Portable Dock w/ Qi Charging

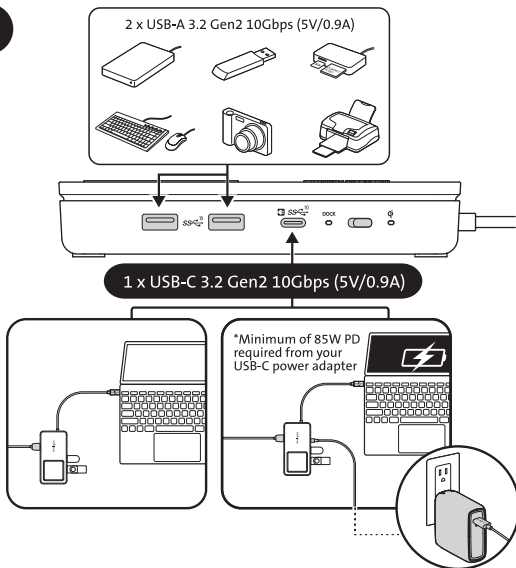


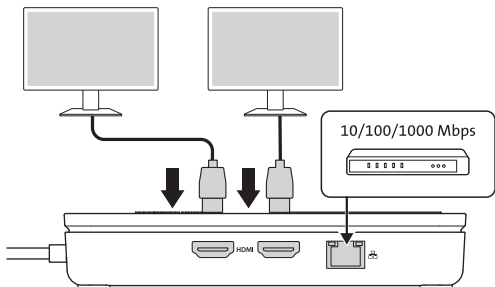
kensington.com/register

1

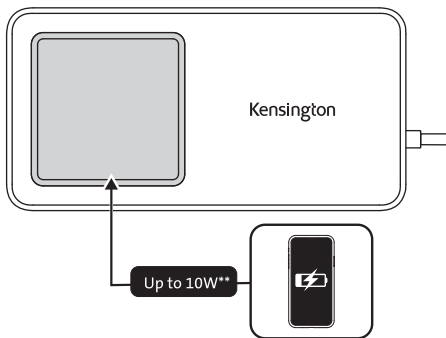


2





HBR2	4K @ 30Hz	1080p @ 60Hz
HBR3	4K @ 60Hz	1440p @ 60Hz
HBR3+DSC1.2	4K @ 60Hz	4K @ 60Hz



**Host USB-C port must support 5V/3A (15W) of power to enable full Qi charging

3

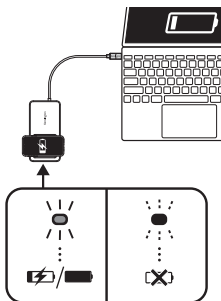
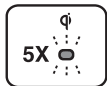
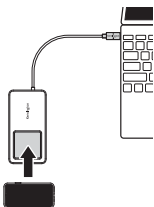


a1

DOCK



a2



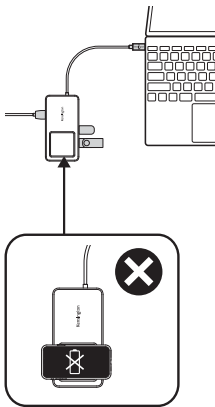
b1

DOCK



Qi

b2

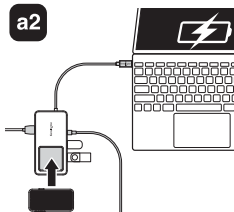


**a1**

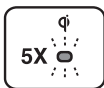
DOCK



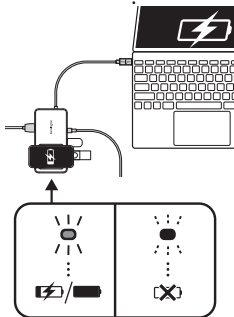
Qi

**a2**

⋮



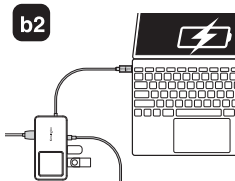
⋮

**b1**

DOCK



Qi

**b2**

***The additional products powered by this docking station shall have a fire enclosure complying with IEC 60950-1 or IEC 62368-1. Please contact your host device manufacture to confirm the above compliance.

5X



EN LED Flashes Blue

DE LED blinkt blau

FR La LED clignote en bleu

IT Il LED lampeggia in blu

ES El LED parpadea en azul

PT LED intermitente azul

AE يومض باللون الأزرق LED مصباح

CN LED 蓝灯闪烁

JP LEDが青で点滅



EN LED continues to be Blue

DE LED leuchtet weiterhin blau

FR La LED reste bleue

IT Il LED continua ad essere blu

ES El led se mantiene azul

PT LED fixo azul

AE لا يزال يومض باللون الأزرق LED مصباح

CN LED 蓝灯长亮

JP LEDが青で常時点灯



EN LED Flashes Red

DE LED blinkt rot

FR La LED clignote en rouge

IT Il LED lampeggia in rosso

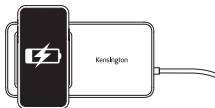
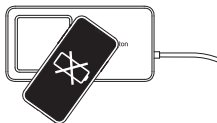
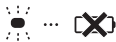
ES El led parpadea en rojo

PT LED intermitente vermelho

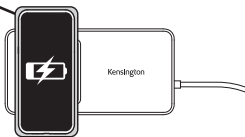
AE يومض باللون الأحمر LED مصباح

CN LED 红灯闪烁

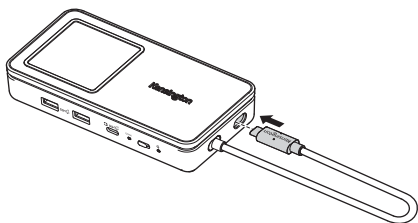
JP LEDが赤で点滅



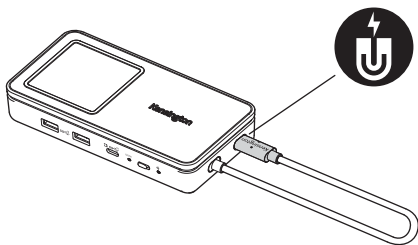
Thickness < 3mm



a



b



c



- EN** *Minimum of 85W PD required from your USB-C power adapter.
- DE** *Mindestens 85 W PD von Ihrem USB-C-Netzteil erforderlich.
- FR** *Votre adaptateur d'alimentation USB-C doit fournir une puissance minimale de 85 W.
- IT** *Erogazione di potenza minima richiesta dall'adattatore di alimentazione USB-C: 85 W.
- ES** *Se requiere un adaptador de corriente USB-C de mínimo 85 W de potencia.
- PT** *Mínimo de 85 W PD necessário do seu adaptador de alimentação USB-C.
- AE** *يلزم توفر 85W PD بحد أدنى من محول طاقة USB-C لديك*
- CN** *您的 USB-C 电源适配器至少需要提供 85W 的输出功率。
- JP** *USB-C電源アダプターから85W以上の電力供給が求められます。

- EN** **Host USB-C port must support 5V/3A (15W) of power to enable full Qi charging.
- DE** **Host-USB-C-Anschluss muss 5 V/3 A (15 W) Leistung unterstützen, damit die Qi-Aufladung uneingeschränkt funktioniert.
- FR** **Le port USB-C de l'hôte doit prendre en charge une alimentation de 5 V/3 A (15 W) pour permettre une charge Qi complète.
- IT** **La porta USB-C dell'host deve supportare una potenza di 5 V/3 A (15 W) per consentire la ricarica Qi completa.
- ES** **El puerto USB-C anfitrión debe soportar 5 V/3 A (15 W) de potencia para habilitar la carga Qi completa.
- PT** **A porta USB-C principal tem de suportar uma tensão de 5 V/3 A (15 W) para permitir o carregamento Qi total.
- AE** **يجب أن يدعم منفذ USB-C للمضيف طاقة بمعدل 5 فولت/3 أمبير (15 وات) لتمكين شحن Qi الكامل**
- CN** **主机的 USB-C 端口必须支持 5V/3A (15W) 的电源才能实现完全的 Qi 充电。
- JP** **ホスト USB-Cポートは、Qiフル充電を可能にするために、5V/3A (15W) の電力をサポートする必要があります。

Operating Frequency range: 112-145kHz

The Field Strength is 76.63 dBuV/m

Maximum RF output: 0 dBm

- EN** ***The additional products powered by this docking station shall have a fire enclosure complying with IEC 60950-1 or IEC 62368-1. Please contact your host device manufacture to confirm the above compliance.
- DE** ***Die zusätzlichen über diese Dockingstation versorgten Produkte verfügen über ein Brandschutz-Gehäuse, das mit IEC 60950-1 oder IEC 62368-1 übereinstimmt. Wenden Sie sich bitte an den Hersteller Ihres Hauptgerätes, um die Einhaltung der oben genannten Anforderungen zu bestätigen.
- FR** ***Les produits supplémentaires alimentés par cette station d'accueil doivent avoir une enceinte coupe-feu conforme à la norme IEC 60950-1 ou IEC 62368-1. Veuillez contacter le fabricant de votre dispositif hôte pour confirmer la conformité ci-dessus.
- IT** ***Eventuali prodotti aggiuntivi alimentati da questa docking station devono disporre di un involucro antincendio conforme agli standard IEC 60950-1 o IEC 62368-1. Contattare il produttore del dispositivo host per confermare la conformità di cui sopra.
- ES** ***Los productos adicionales alimentados con esta estación de carga deben contar con una carcasa contra incendios conforme con las normas IEC 60950-1 y IEC 62368-1. Póngase en contacto con el fabricante de su dispositivo anfitrión para confirmar el cumplimiento de lo anterior.
- PT** ***Os produtos adicionais ligados a esta estação de ancoragem devem dispor de uma proteção contra incêndio em conformidade com a IEC 60950-1 ou IEC 62368-1. Contacte o fabricante do dispositivo anfitrião para confirmar a conformidade indicada acima.
- AE** ***تتضمن المنتجات الإضافية التي تعمل باستخدام محطة الإرساء هذه ملحقاتًا تاريًا متوافقًا مع المعيار IEC 60950-1 أو IEC 62368-1. يُرجى الاتصال بالشركة المصنعة للجهاز المضيف من أجل تأكيد التوافق الموضح أعلاه.
- CN** ***由该扩展坞供电的附加产品应具备符合IEC60950-1或IEC 62368-1标准的防火外壳。请联系您的主机设备制造商以确认上述合规性。
- JP** ***このドッキングステーションで駆動される追加製品には、IEC 60950-1またはIEC 62368-1に準拠する防火筐体に収納されています。上記準拠について確認するには、ホストデバイスのメーカーにお尋ねください。



www.kensington.com/support

Kensington and the ACCO name and design are registered trademarks of ACCO Brands. All other registered and unregistered trademarks are the property of their respective owners. The Qi logo is a trademark of the Wireless Power Consortium.

©2022 Kensington Computer Products Group, a division of ACCO Brands. Any unauthorized copying, duplicating, or other reproduction of the contents hereof is prohibited without written consent from Kensington Computer Products Group. All rights reserved.



この装置は、クラスB機器です。この装置は、住宅環境で使用することを目的としていますが、この装置がラジオやテレビの受信機に近接して使用されると、受信障害を引き起こすことがあります。
取扱説明書に従って正しい取扱いをして下さい。

VCCI - B



K32800

901-5316-01